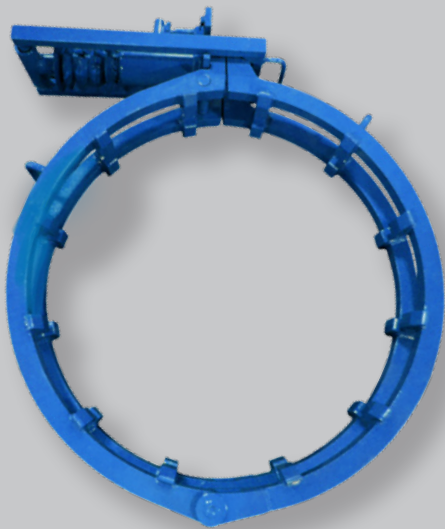


Hydraulic Cage Clamp



Model 255H



OVERVIEW

Sawyer's Hydraulic Cage Clamp provides effortless pipe alignment for those jobs where a bit of extra power is required. Available for 16" to 60" pipe and able to meet a wide variety of pipe-to-pipe fit up requirements but especially useful when aligning large pipe, this might just be the last pipeline welding clamp you will ever need. Simple, quick and easy to use.



FEATURES AND BENEFITS

- Available for pipe sizes 16" - 60"+
- Larger sizes available upon request
- Crossbars options are flat (tack) or arched (no tack)
- No tack design allows full 360° welding
- Each clamp fits a specific pipe diameter
- Simple, quick, and easy to use
- Positive, accurate alignment
- 1 year warranty

ESTIMATED SHIPPING WEIGHT

Model No.	Description	Weight	
255H-16	16" Hydraulic Clamp	130 lbs.	59.0 kg.
255H-20	20" Hydraulic Clamp	136 lbs.	61.7 kg.
255H-24	24" Hydraulic Clamp	145 lbs.	65.8 kg.
255H-30	30" Hydraulic Clamp	178 lbs.	80.7 kg.
255H-36	36" Hydraulic Clamp	195 lbs.	88.5 kg.
255H-42	42" Hydraulic Clamp	222 lbs.	100.7 kg.
255H-48	48" Hydraulic Clamp	314 lbs.	142.4 kg.
255H-56	56" Hydraulic Clamp	346 lbs.	157.0 kg.
255H-60	60" Hydraulic Clamp	361 lbs.	163.7 kg.

*For additional sizes contact Sawyer

Follow us on social media and watch product videos on our YouTube channel **Sawyer Mfg**

918-834-2550



sawyermfg.com

ACCESSORIES

JACK SCREW WEDGES (480)

- Available in 2 sizes for clamps 16"-28" and 30"-48"
- Will work with all major manufacturer's cage clamps
- Hold fittings in place when using an external clamp
- Precision machined for accuracy
- Heat treated for durability



HI-LO WEDGES (460)

- Available in 2 sizes for clamps 16"-28" and 30"-48"
- 1" and 1 1/4" to fit all major manufacturer's cage clamps
- Precision machined for accuracy
- Heat treated for durability
- Simple solution to hi-lo

