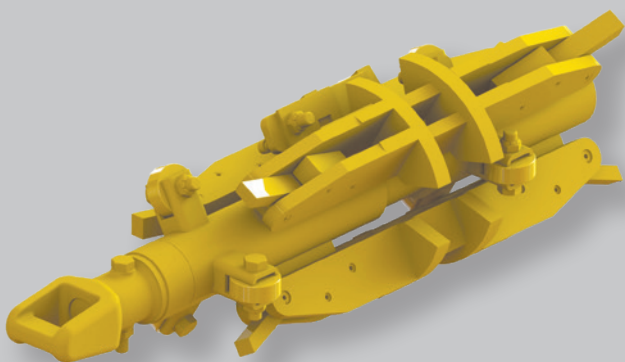


Small Manual Clamp



Model 242W



OVERVIEW

Sawyer Mfg's Small Manual Clamp is a great solution for small pipe welding. Each clamp is custom built for accurate internal alignment. Built tough to withstand the harshest conditions. This clamp comes standard with a 49' reach rod, hook and handle, so it's instantly ready to use. Self-positioning and easy to use.

FEATURES AND BENEFITS

- For pipe ID sizes 6" and 8"
- Carbon steel construction standard
- Optional with copper or stainless steel
- Choice of hard or soft wheels
- Self positioning and simple to use
- Gap is unobstructed for full stringer bead
- Comes standard with 49' reach rod, hook, and handle
- Built for rugged use and easily maintained

ESTIMATED SHIPPING WEIGHT

Model No.	Description	Weight	
242W-6	Small Manual Internal Clamp 6"	120 lbs.	54.4 kg.
242W-8	Small Manual Internal Clamp 8"	126 lbs.	57.2 kg.