



E-Z Clamp

Model 252A, 252B,
252C, 252D

About Us

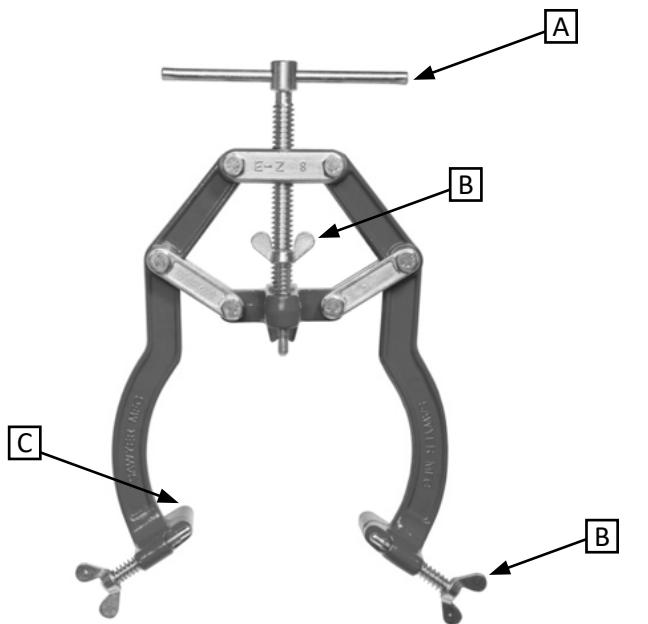
We appreciate your business!

Congratulations on your new SAWYER product. We are proud to have you as our customer and will strive to provide you with the best service and reliability in the industry. This product is backed by our extensive warranty and world-wide service network. To locate your nearest distributor or service agency, please contact us at the phone number and address listed on the bottom of each page.

You are in good company!

Sawyer Manufacturing Company is the world leader in the design and manufacture of pipeline and welding equipment and has been since 1948. Sawyer equipment has become a standard in the industry and continues to set the benchmark for quality and durability.

This user operation manual has been made to instruct you for the best use and operation of your Sawyer product. Your satisfaction with our products is our main goal. Please read this entire manual carefully, noting all tips, notes and warnings. Safety always comes first.



- A. T-Handle
- B. Thumbscrew
- C. Pipe rests
- D. Stainless steel shoes **not pictured**



CAUTION

CAUTION: Sawyer Manufacturing offers an easy to use line of E-Z clamps for the purpose of welding two pipes together. The E-Z clamps are not intended to be used as sole supports of the pipe nor to lift the pipe. These clamps are not designed for the use of tees, elbows, valves or other fittings. After each use clean and store in a warm, dry area.

Warranty

All products manufactured by or for Sawyer Manufacturing Company are guaranteed against defects due to faulty workmanship or materials for twelve months from the date of purchase.

This guarantee is limited to the repair or replacement of any parts found to be defective, and no other liability—expressed, implied, or contingent—is assumed.

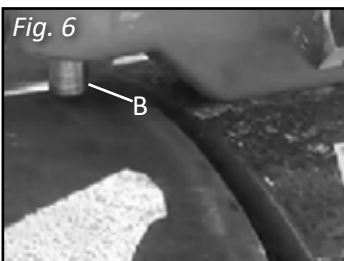
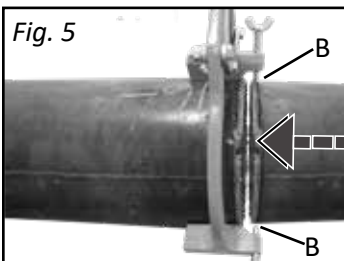
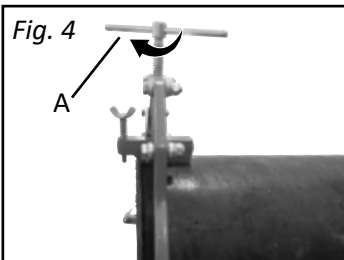
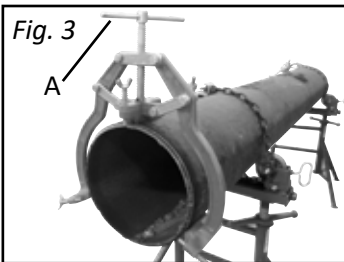
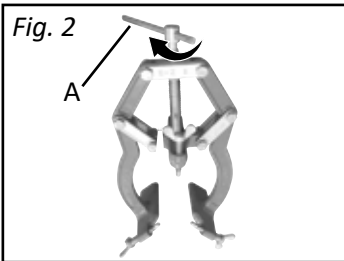
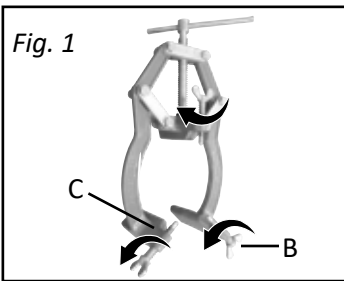
Record the following information for warranty purposes:

Where purchased: _____

Purchase date: _____

Equipment Serial #: _____

Operation

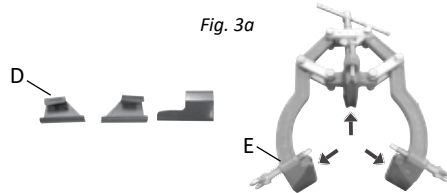


1. Turn (3) thumbscrews (B) counterclockwise until they are even with pipe rests. (C, Fig 1)

2. Open clamp by turning T Handle (A) counterclockwise. (Fig. 2)

3. Mount E-Z Clamp onto end of primary pipe. (Fig. 3)

Note: For stainless steel pipe applications install stainless steel shoes (D) and stainless Steel thumbscrews (E, Fig. 3a)



4. Turn T handle (A) clockwise until clamp fits snug on pipe. (Fig. 4)

5. Place secondary pipe into thumb screws. (B, Fig 5)

Note: Clamp is not to be used as a sole support of pipe

6. Tighten thumbscrews (B) onto secondary pipe.

Note: Use a spacer wedge and Hi-Lo gauge to determine appropriate alignment (Fig 6)

	WARNING	
WARNING: Refer to manufacturers settings for safety settings.		