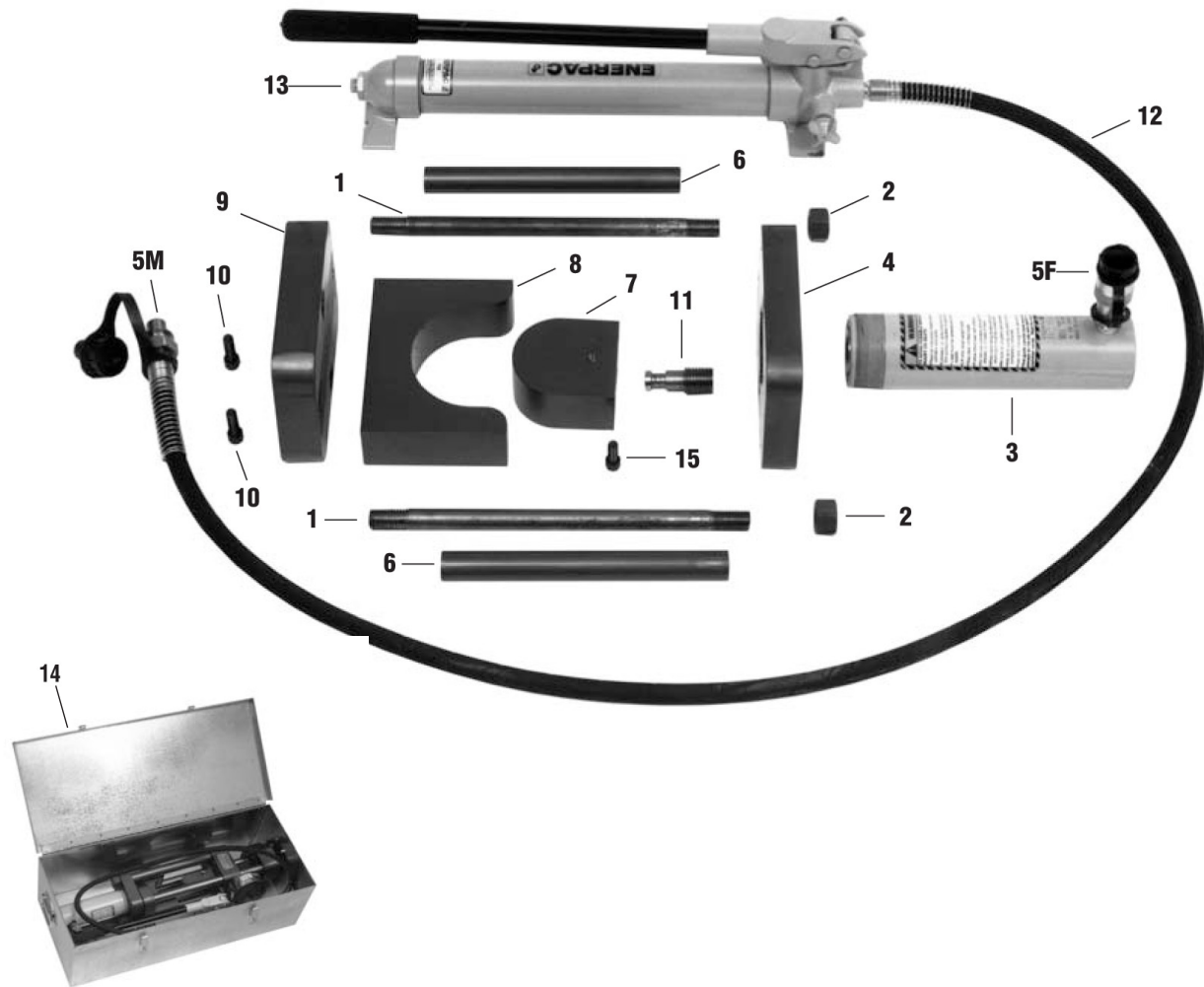


Parts List

273-15 Guided 15-ton Strap Bender



No.	Part Name	Part No.	Qty.
1	Tension Shaft	C4FF-1	2
2	Nut	517-29	2
3	Hydraulic Cylinder	526-1	1
4	Base	C4FF-4	1
5	1/2 Hydraulic Coupling F or M	526-8	1
6	Spacer	C4FF-6	2
7	Plunger (determined by code)	C4FF-7	1
8	Die (determined by code)	C4FF-8	1

No.	Part Name	Part No.	Qty.
9	Head	C4FF-9	1
10	Bolt	519-38	2
11	Stud	C4FF-11	1
12	Hydraulic Hose Assembly	527-1	1
13	Hydraulic Pump	526-4	1
14	Metal Case	B13R-A	1
15	Bolt	519-34	1



SAWYER MFG COMPANY

7799 S Regency Drive • Tulsa, OK 74131
 P (918) 834-2550 • F (918) 834-0318