



Tractor Bending Shoe Model 305B

(3"-16") all sizes

About Us

We appreciate your business!

Congratulations on your new SAWYER product. We are proud to have you as our customer and will strive to provide you with the best service and reliability in the industry. This product is backed by our extensive warranty and world-wide service network. To locate your nearest distributor or service agency, please contact us at the phone number and address listed on the bottom of each page.

You are in good company!

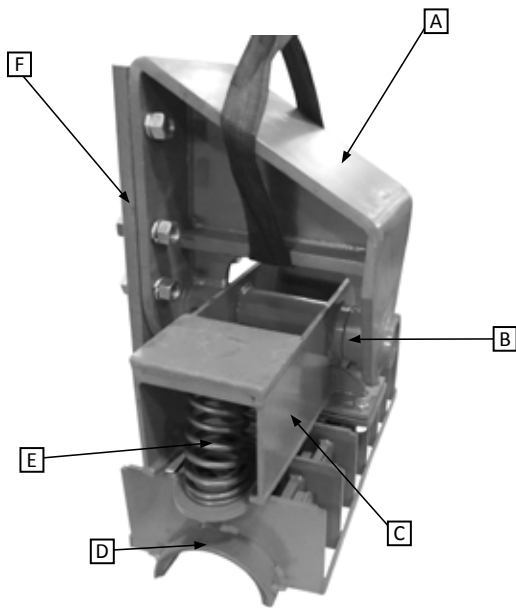
Sawyer Manufacturing Company is the world leader in the design and manufacture of pipeline and welding equipment and has been since 1948. Sawyer equipment has become a standard in the industry and continues to set the benchmark for quality and durability.

This user operation manual has been made to instruct you for the best use and operation of your Sawyer product. Your satisfaction with our products is our main goal. Please read this entire manual carefully, noting all tips, notes and warnings. Safety always comes first.

A WORD OF CAUTION

Sawyer Manufacturing offers a line of tractor bending shoes for the purpose of bending pipes. Stay clear of moving objects and make sure all pieces are secure before bending. Ensure that the pipe is in place on the shoe before bending. Use caution when operating the tractor. After each use clean and store in a warm, dry area.

Tractor Bending Shoe



- A. Mounting bracket
- B. Pin
- C. Adapter
- D. Bending shoe
- E. Springs
- F. Mounting plate

Tools Needed



(2) Large crescent wrenches



Welding machine



(2) C Clamps



Cutting wheel

Record the following information for warranty purposes:

Where purchased: _____

Purchase date: _____

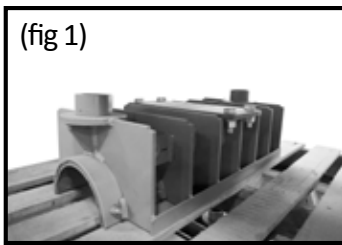
Equipment Serial #: _____

Warranty

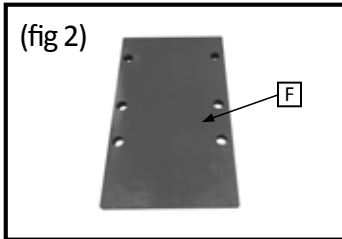
All products manufactured by or for Sawyer Manufacturing Company are guaranteed against defects due to faulty workmanship or materials for twelve months from the date of purchase.

This guarantee is limited to the repair or replacement of any parts found to be defective, and no other liability—expressed, implied, or contingent—is assumed.

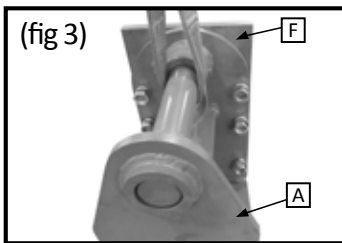
Installation



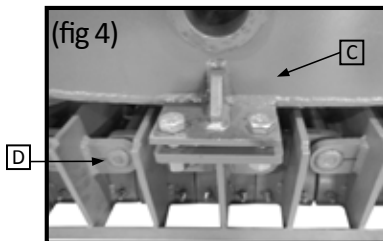
1. Cut off (2) support rods before installation and operation of bending shoe (fig 1)



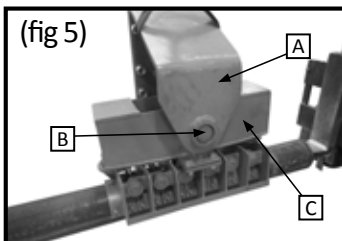
2. Weld or bolt mounting plate (F) to tractor according to its application (figure 2)



3. Bolt mounting bracket (A) to mounting plate (F) (figure 3)

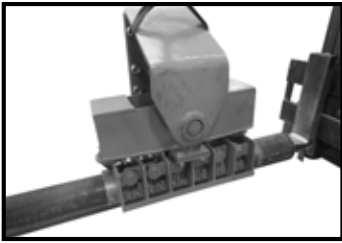


4. Mount adapter (C) to bending shoe (D) (figure 5)
Note: Use C clamp to compress adapter (C) onto bending shoe (D)

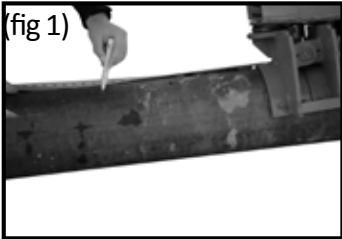


5. Place adapter (C) into mounting bracket (A) using pin (B)

Operation

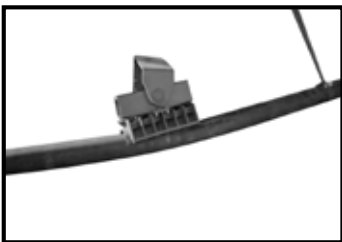


1. Place bending shoe over pipe to be bent



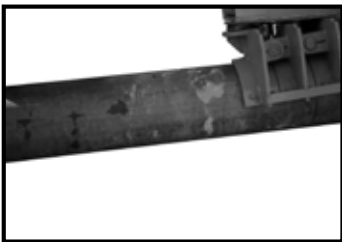
2. Determine length of pipe bend, make marks on pipe to be bent. (FIG 1)

Note: Not designed to bend at end of pipe



3. Attach bending cable to end of pipe

4. Pull up on cable to bend pipe into bending shoe



5. Continue to bend pipe to desired angle, placing the bending shoe on marks made in