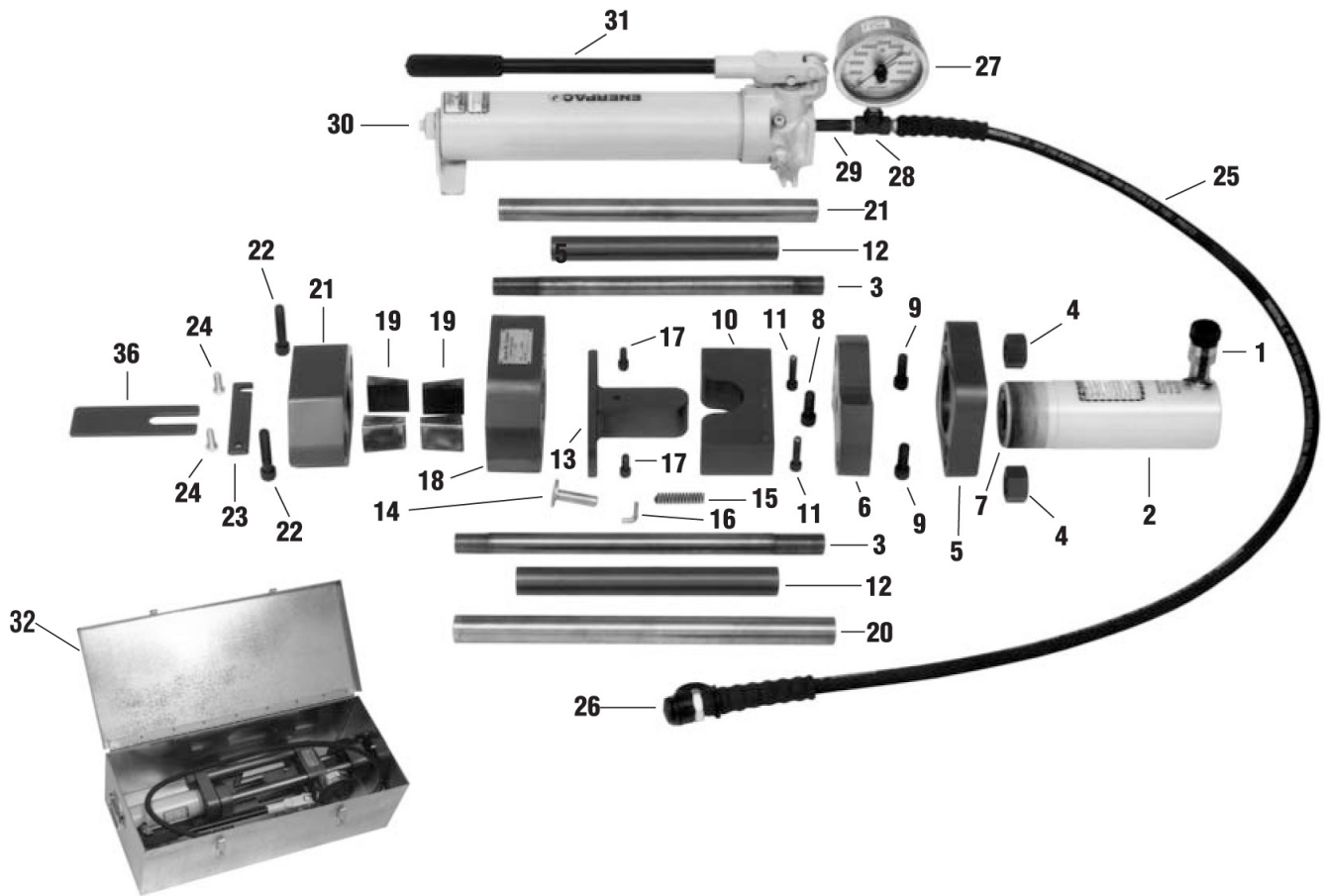


Parts List

273-25 - 25 Ton Guided Bend and Tensile Tester



No.	Part Name	Part No.	Qty.
1	1/2 Hydraulic Coupling - F	526-8-F	1
2	Hydraulic Cylinder	526-2	1
3	Tension Shaft	B529CN-A	2
4	Nut	517-30	2
5	Base	B12BE	1
6	Sub Base	B12BF	1
7	Adaptor	A41DG	1
8	Bolt	519-66	1
9	Bolt	519-69	2
10	Die*	B116*	1
11	Bolt	519-68	2
12	Spacer	B29CN-B	2
13	Plunger*	B116*	1
14	Plunger	A110B-A	1
15	Spring	A110B-B	1
16	"L" Bolt	A11-B-C	1
17	Bolt	519-34	2
18	Stationary Head	B25AK	1

No.	Part Name	Part No.	Qty.
19	Jaw*	A115A*	4
20	Compression Shaft	B29CN-C	2
21	Traveling Head	B25AL	1
22	Bolt	519-68	2
23	Jaw Retainer	B25AO-B	1
24	Bolt	519-37	2
25	Hydraulic Hose Assembly	527-1	1
26	1/2 Hydraulic Coupling - M	526-8-M	1
27	Gauge	526-12	1
28	Pipe "T"	526-9	1
29	Pipe Nipple	526-11	1
30	Hydraulic Pump	526-5	1
31	-		
32	Metal Case	B13R-B	1
33	Electric Pump (Optional -Not Shown)	526-6	1
34	Pnumatic Pump (Optional)	526-7	1
35	Conversion Chart (Not Shown)	A3S-B	1
36	Jaw Tensioner	A119V	1

*Determined by sample thickness and code requirements



SAWYER MFG COMPANY

7799 S Regency Drive • Tulsa, OK 74131
 P (918) 834-2550 • F (918) 834-0318