

MOTORIZED KIT

About Us

We appreciate your business!

Congratulations on your new SAWYER product. We are proud to have you as our customer and will strive to provide you with the best service and reliability in the industry. This product is backed by our extensive warranty and world-wide service network. To locate your nearest distributor or service agency, please contact us at the phone number and address listed on the bottom of each page.

You are in good company!

Sawyer Manufacturing Company is the world leader in the design and manufacture of pipeline and welding equipment since 1948. Sawyer equipment has become a standard in the industry and continues to set the benchmark for quality and durability.

This user operation manual has been made to instruct you for the best use and operation of your Sawyer product. Your satisfaction with our products is our main goal. Please read this entire manual carefully noting all tips, notes and warnings. Safety always comes first.



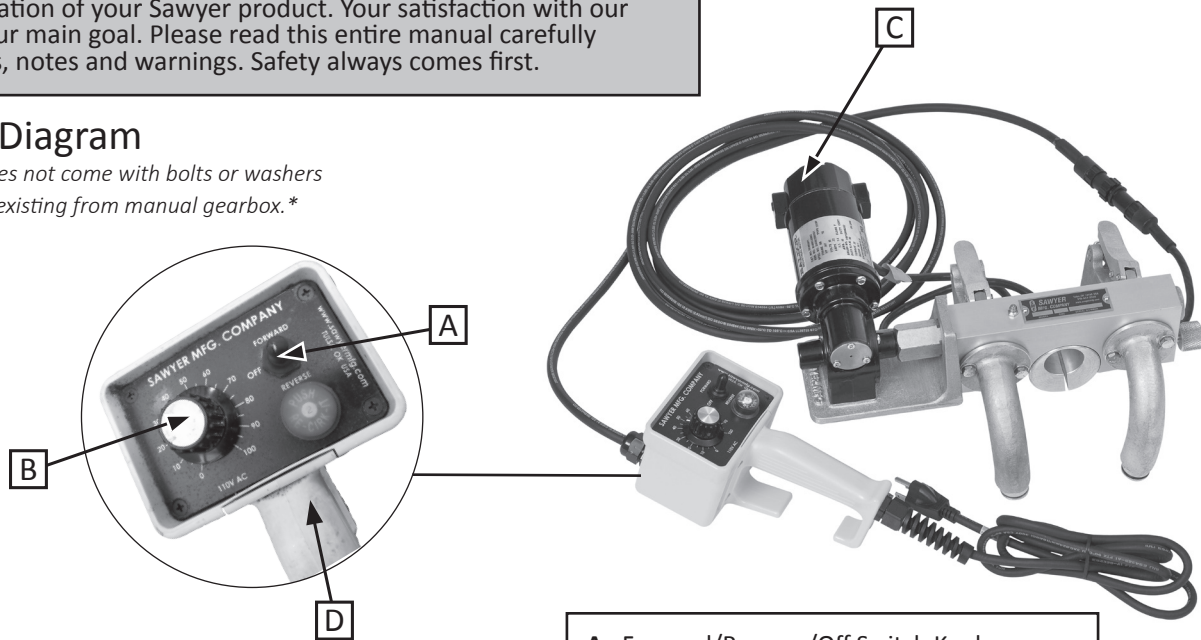
SAWYER
MFG COMPANY

Motorized Kit Manual

**Models 206F
For Band Type Beveling
Model 206D**

Parts Diagram

**Note: Does not come with bolts or washers
Use existing from manual gearbox.**



- A. Forward/Reverse/Off Switch Knob
- B. Speed Knob
- C. Baldor Motor Assembly
- D. Motorized Handle Assembly

Tools

Needed for Assembly*



9/16" Nut Drive

**Not Included*



WARNING

WARNING: Moving parts can snag and pull. Keep loose items clear.



WARNING

WARNING: Refer to manufactures settings for safety settings.

Warranty

All products manufactured by or for Sawyer Manufacturing Company are guaranteed against defects due to faulty workmanship or materials for twelve months from the date of purchase.

This guarantee is limited to the repair or replacement of any parts found to be defective, and no other liability, expressed, implied or contingent is assumed.

Sawyer Manufacturing Company
7799 S. Regency Dr., Tulsa, OK 74131 USA
P 918.834.2550 | F 918.834.0318
sawyerfmfg.com | info@sawyerfmfg.com

V1.2